

MONTHLY MEMBERSHIP PROGRESS REPORT

District A 9

Results as of: 3/31/2026

GMT:

LOCATION ONTARIO

GMT CA

Clubs			
RESULTS FOR 2025-2026			
QUARTER	NEW CLUB GOAL	NEW CLUBS	DROPPED CLUBS
JULY/AUG/SEPT	0	0	0
OCT/NOV/DEC	1	0	0
JAN/FEB/MAR	0	0	0
APR/MAY/JUNE	0	0	0

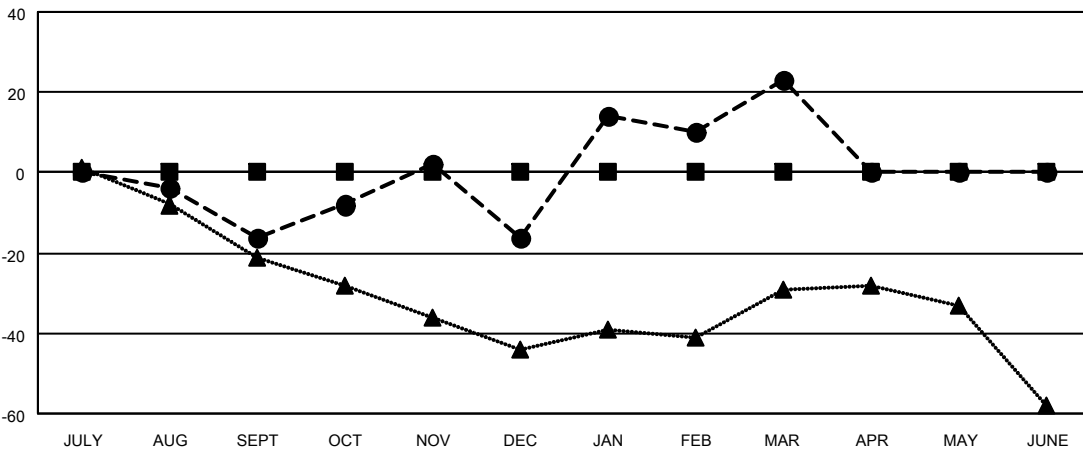
Members			
RESULTS FOR 2025-2026			
QUARTER	MEMBER GROWTH NET GOAL	MEMBER GROWTH ACTUAL	DROPPED MEMBERS ACTUAL (including transfers)
JULY/AUG/SEPT	0	14	29
OCT/NOV/DEC	0	38	31
JAN/FEB/MAR	0	53	11
APR/MAY/JUNE	0	0	0

GOALS AND ACTUAL NEW CLUBS CUMULATIVE



- - CURRENT YEAR GOALS FOR NEW CLUBS
- - CURRENT YEAR ACTUAL NEW CLUBS
- ▲ - LAST YEAR ACTUAL NEW CLUBS

GOALS AND ACTUAL MEMBERS CUMULATIVE



- - MEMBER GROWTH NET GOAL
- - MEMBER GROWTH ACTUAL
- ▲ - LAST YEAR MEMBERSHIP ACTUAL

DROPPED CLUBS: 0	26 CLUBS OF 39 ADDED 1 OR MORE NEW MEMBERS	GENDER DISTRIBUTION
		MALE 784 (68.89%)
		FEMALE 354 (31.11%)
DROPPED MEMBERS	CLICK HERE FOR CUMULATIVE MEMBERSHIP DATA	TOTAL FAMILY UNIT MEMBERS 248
DECEASED 14		FAMILY MEMBERS PAYING HALF DUES 127
CLUB CANCELLED 0		
OTHER 57		
TOTAL 71		